



## Fire resistant steel door T 30-1-FSA „Teckentrup 42“

door with thin rebate

### Text example:

T 30-1-FSA fire-proof steel door tested in accordance with DIN 4102 (EN 1634-1). Single-leaf door element. Flush-mounted door leaf without hinge stamping. Type of handing DIN right. Door-leaf 42 mm thick, rebated on 3-sides. Corner frame 2.0 mm thick, with 3-sided seal. Door-leaf and frame galvanized and powder-coated (primed) in Grey-white, similar to RAL 9002. Mortice lock with latch lever in accordance with DIN 18250, prepared for profile cylinder. Black plastic round handle set, handle pivoted on bearing, with tumbler insert (Bb) and 1 Bb key. 1 security bolt. 1 spring hinge and 1KO hinge with ball bearings. „Teckentrup 42“ or equivalent.

(Compile and tender according to requirements. Please refer to technical data for respective details. Updated 01.march 2018)

### Technical data

<b>Building authority approval:</b>	Z-6.20-1956 tested in acc. with EN 1634-1 (DIN 4102) for installation in internal walls Heat transfer coefficient in acc. with EN ISO 12567-1 (without glazing) $U_D = 1.5 \text{ W/m}^2\text{K}$	<b>Special equipment</b>	<ul style="list-style-type: none"> <li>▪ Handle sets/ Lever/ Knob sets:               <ul style="list-style-type: none"> <li>- Plastic</li> <li>- Light metal</li> <li>- Stainless steel</li> <li>- with short plate or rose escutcheon (various makes)</li> </ul> </li> <li>▪ prepared for rose escutcheon</li> <li>▪ Locks:               <ul style="list-style-type: none"> <li>- profil cylinder 30,5 + 30,5 mm</li> <li>- panic lock</li> <li>  block lock (must be provided)</li> </ul> </li> <li>▪ Panic bar</li> <li>▪ Top door closer DIN EN 1154               <ul style="list-style-type: none"> <li>- head assembly</li> <li>- with slide rail</li> <li>- with locking device</li> <li>- with smoke detector</li> </ul> </li> <li>▪ For installation in lightweight construction stud walls with top door closer</li> <li>▪ For installation in autoclaved aerated concrete walls with top door closer</li> <li>▪ Electric door opener</li> <li>▪ Integrated lock inspector (bolt contact)</li> <li>▪ Integrated opening indicator (Reed contact)</li> <li>▪ Hold-open devices</li> <li>▪ Floor seals are retrofittable</li> </ul>
<b>Installation in</b>	<ul style="list-style-type: none"> <li>▪ Masonry min 115 mm</li> <li>▪ Concrete min 100 mm</li> <li>▪ Lightweight construction stud walls min 88 mm</li> <li>▪ Autoclaved aerated concrete wall min. 115 mm</li> <li>- reinforced type min. 115 mm</li> <li>▪ Installation on concealed steel/ wooden supports F60</li> </ul> <p>* min. <math>\geq F 30</math> as per DIN 4102-4 or in accordance with general building authority test certificate refer to installation data details tab.</p>		
<b>Approved dimensions</b>	Modular dimensions: Width: 625 - 1125 mm Height: 1750 - 2250 mm		
<b>Handing</b>	Can be used left / right handed		
<b>Door leaf</b>	Double-skinned, 3 sides: <b>thin rebated</b> Door leaf thickness: 42 mm Sheet thickness: 1 mm Security bolt: mind. 1		
<b>Frame</b>	corner frame 2 mm thick, with 3-sided seal and bottom sill. Frame fastening by exposed masonry mounting Special equipment: <ul style="list-style-type: none"> <li>▪ block frame, counter frame or closed frame</li> <li>▪ counter frame or closed frame required for installation in lightweight construction stud walls/ autoclaved aerated concrete.</li> <li>▪ with floor recess</li> </ul>		
<b>Surface</b>	Door leaf/Frame galvanized and powder coated (primed) similar to RAL 9002 (Grey-white)		
<b>Hinges, closing devices</b>	<ul style="list-style-type: none"> <li>▪ 1 Spring hinge</li> <li>▪ 1 KO hinge with ball bearings</li> <li>▪ Compensation rings for height adjustment</li> </ul>		
<b>Fittings</b>	<ul style="list-style-type: none"> <li>▪ Mortice lock with latch lever in as per DIN 18250</li> <li>▪ black plastic handle set, handle pivoted on bearing, with tumbler insert (Bb) and 1 Bb key</li> <li>Special equipment:               <ul style="list-style-type: none"> <li>▪ KO hinges with ball bearings and top door closer</li> </ul> </li> </ul>		
		<b>Ordering size/ modular dimensions width x height</b>	<b>Clear passage size width x height</b>
		<b>Standard stock sizes steel door</b>	
		750 x 2000	680 x 1965
		2125	2090
		875 x 1875	805 x 1840
		2000	1965
		2125	2090
		1000 x 2000	930 x 1965
		2125	2090
		1125 x 2000	1055 x 1965
		2125	2090

(Special sizes: from 625 x 1750 to 1125 x 2250)

**Further qualifications**  
(special equipment):



**smoke-proof** in acc. with EN 1634-3 with top door closer for solid walls and construction stud walls



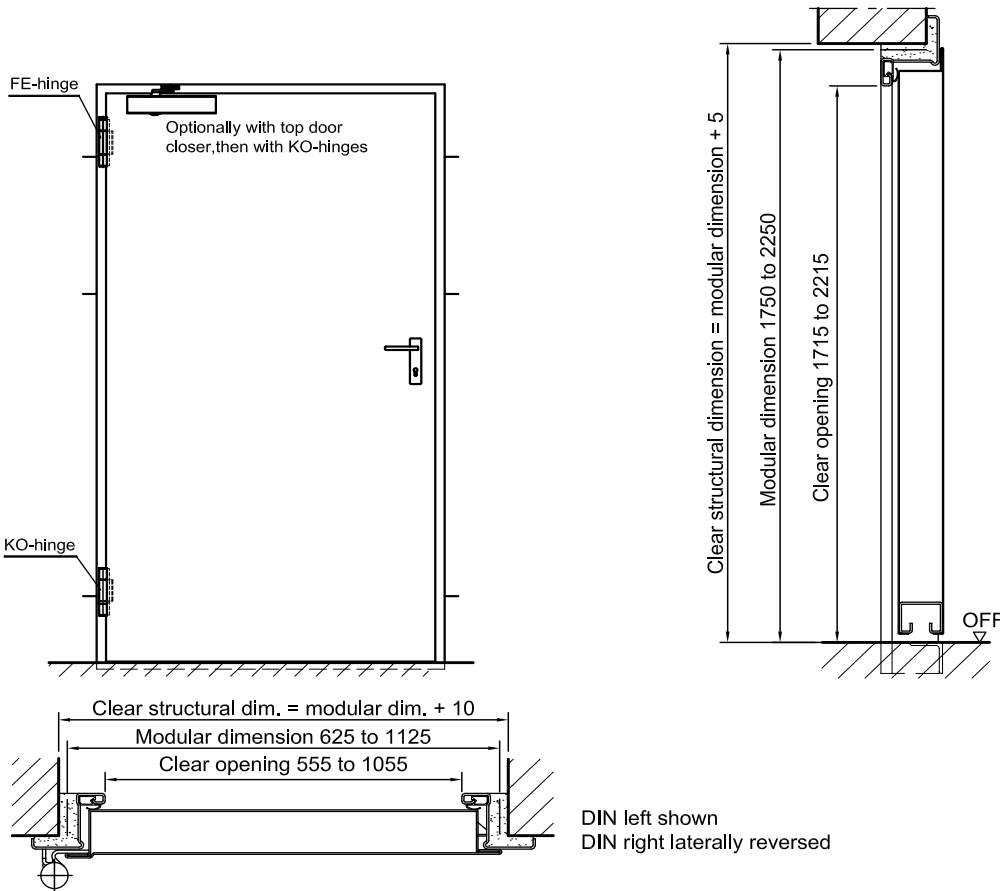
**Sound insulated** in acc. with DIN EN 20140/717 part1  
**RW 40dB** with bottom buffer (standard)  
**RW 38dB** with sliding threshold seal  
**RW 38dB** with sliding threshold seal



**Burglar resistant**  
in acc. with DIN ENV 1627 WK2

**Fire resistant steel door**  
**T 30-1-FSA „Teckentrup 42“**

door with thin rebate



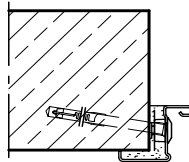
**Floor connections:**

Image 1: With bottom buffer  
Image 2: With bottom buffer/seal  
Image 3: With bottom seal (smoke-proof door with top door closer)

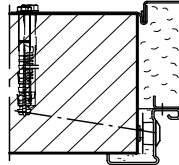


**Installation in masonry/ concrete walls**  
concrete walls ≥ 100 mm  
masonry walls ≥ 115 mm

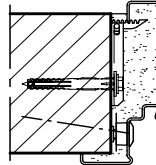
**Exposed masonry installation**  
Corner frame



Corner frame with counter frame

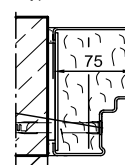


Closed frame

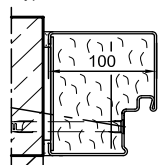


**Flush installation**

Type 4.1

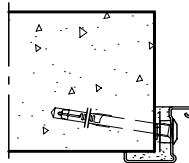


Type 4.2



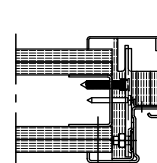
**Installation in autoclaved aerated concrete walls** (doors with top door closer). Made of autoclaved aerated concrete blocks or high precision units min. 115 mm or made of reinforced autoclaved aerated concrete slabs strength class 4. Wall thickness ≥ 115 mm

**Wall plug assembly**  
Corner frame

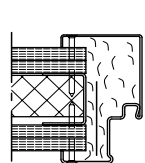


**Installation in lightweight construction stud walls** (doors with top door closer) min. F30 Part 4 or in acc. with general building authority test certificate wall thickness min. 88 mm. For permissible walls refer to the Installation details tab.

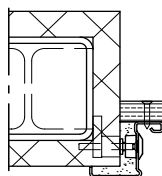
Corner frame with counter frame



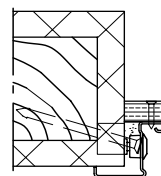
Closed frame



**Installation on concealed steel supports**  
F60



**Installation on wooden supports**  
F60



Please find a detailed installation overview in the planning-, installation- and maintenance manual for 1-leaf and 2-leaf doors.