



Fire-resistant steel trap door/steel door T 30-1-FSA „Teckentrup 62“

optionally with glazing, optionally with top light/upper casing

Text example:

T 30-1-FSA fire-proof steel door tested in accordance with DIN 4102 (EN 1634-1). Single leaf door element. Door leaf 62 mm thin rebated on three sides. Corner frame 1,5/2,0mm thick with 3-sided seal. Door leaf and frame galvanized and prime coated similar to RAL 9002 (Grey white). Mortice lock with latch lever in accordance with DIN 18250, prepared for profile cylinder. Black plastic round handle set, handle pivoted on bearing, with tumbler insert (Bb) and 1 Bb key. 1 security bolt. 1 spring hinge and 1KO hinge with ball bearings. „Teckentrup 62“ or equivalent.

(Compile and tender according to requirements. Please refer to technical data below for respective details. Updated 1. March 2018.)

Technical data

Also available in **STAINLESS STEEL**

Building authority approval:	Z-6.20-2037 tested as per DIN 4102 (EN1634-1) for installation in internal walls. Heat transfer coefficient as per EN ISO 12567-1 (without glazing) Sheet thickness 1,0 mm: $U_D = 1,3 \text{ W/m}^2\text{K}$ Sheet thickness 1,5 mm: $U_D = 1,4 \text{ W/m}^2\text{K}$	Glazing	Fire resistant glass, Glazing area angled with aluminium glass holding strips. Max. pane size 904 x 2150 mm. round glazing Ø 300, Ø 400 and Ø 500 with steel glass holding strips galvanized and prime-coated, grey-white similar to RAL 9002.
Installation in	<ul style="list-style-type: none"> ▪ Masonry wall min. 115 mm ▪ Concrete wall min. 100 mm ▪ Lightweight construction stud wall min. 88 mm ▪ Autoclaved aerated <ul style="list-style-type: none"> - concrete wall min. 115 mm - reinforced type min. 115 mm ▪ covered steel- wood beams F60 <p>* $F \geq 30$ as per DIN 4102 part 4 or in accordance with the general building authority test certificate. For permissible walls refer to the installation details tab.</p>	Special equipment	<ul style="list-style-type: none"> ▪ Handle sets / Lever/Knob sets: <ul style="list-style-type: none"> - plastic - light metal - stainless steel - with short plate or rose escutcheon (various makes) ▪ prepared for rose escutcheon ▪ locks: <ul style="list-style-type: none"> profile cylinder 40,5 + 40,5 mm - panic locks block lock (must be provided) ▪ top door closer DIN EN 1154 <ul style="list-style-type: none"> - head assembly - with slide rail - with locking device - with smoke detector - ITS 96 (hidden) ▪ electric door opener ▪ Integrated lock inspector (bolt contact) ▪ Integrated opening indicator (Reed contact) ▪ Revolving door drives ▪ Hold-open devices ▪ 3D-hinges (with top door closer)
Approved dimensions	Modular dimension W 500 - 1500 mm H 500 - 4000 mm With top light/ top casing up to H 4600 mm		
Handing	DIN right or DIN left		
Door (trap door) leaf	<ul style="list-style-type: none"> ▪ double skinned, thin rebated ▪ trap door rebated on four sides ▪ Door rebated on three sides ▪ Door leaf thickness: 62 mm ▪ Sheet thickness: 1,0 mm or 1,5 mm ▪ >MD-Height door leaf 3000mm only 1,5 mm ▪ Security bolt: min. -/1 		
Frame	Corner frame 1,5/2,0mm thick, trap door with 4-sided, door with 3-sided seal. Frame fastening by exposed masonry mounting. Special equipment: <ul style="list-style-type: none"> ▪ block-, counter- or closed frame ▪ with floor recess 		
Floor seals	<ul style="list-style-type: none"> ▪ Retractable floor seal ▪ Sliding threshold seal ▪ Buffer strip and seal Floor seal retrofittable		
Surface	Door leaf/Frame galvanized and prime coated, similar to RAL 9002 (Grey white). Special equipment: RAL of choice		
Hinges and closing devices	<ul style="list-style-type: none"> ▪ 1 spring hinge and 1 KO-hinge with ball bearings or ▪ 2 KO with ball bearings and 1 top door closer ▪ compensation rings for height adjustment 		
Fittings	<ul style="list-style-type: none"> ▪ Mortice lock with latch lever DIN 18250. ▪ Black plastic handle set, handle pivoted on bearing with tumbler insert (Bb) and 1 Bb-key 		
		Ordering dimensions / (modular dimensions)	Clear passage size (corner frame)
		Width x height	width x height
		Standard sizes (stock sizes)	
		2000	1961
		2125	2086
		1000x2000	916x1961
		steel door	
		2125	2086
		1125x2000	1041x1961
		2125	2086
		1250x2000	1166x1961
		2125	2086
		2250	2211
(Special sizes: from 500 x 1750 to 1500 x 4000)			

Further Qualifications (Special equipment):



Smoke proof in accordance to 1634-3/ DIN 18095 with top door closer



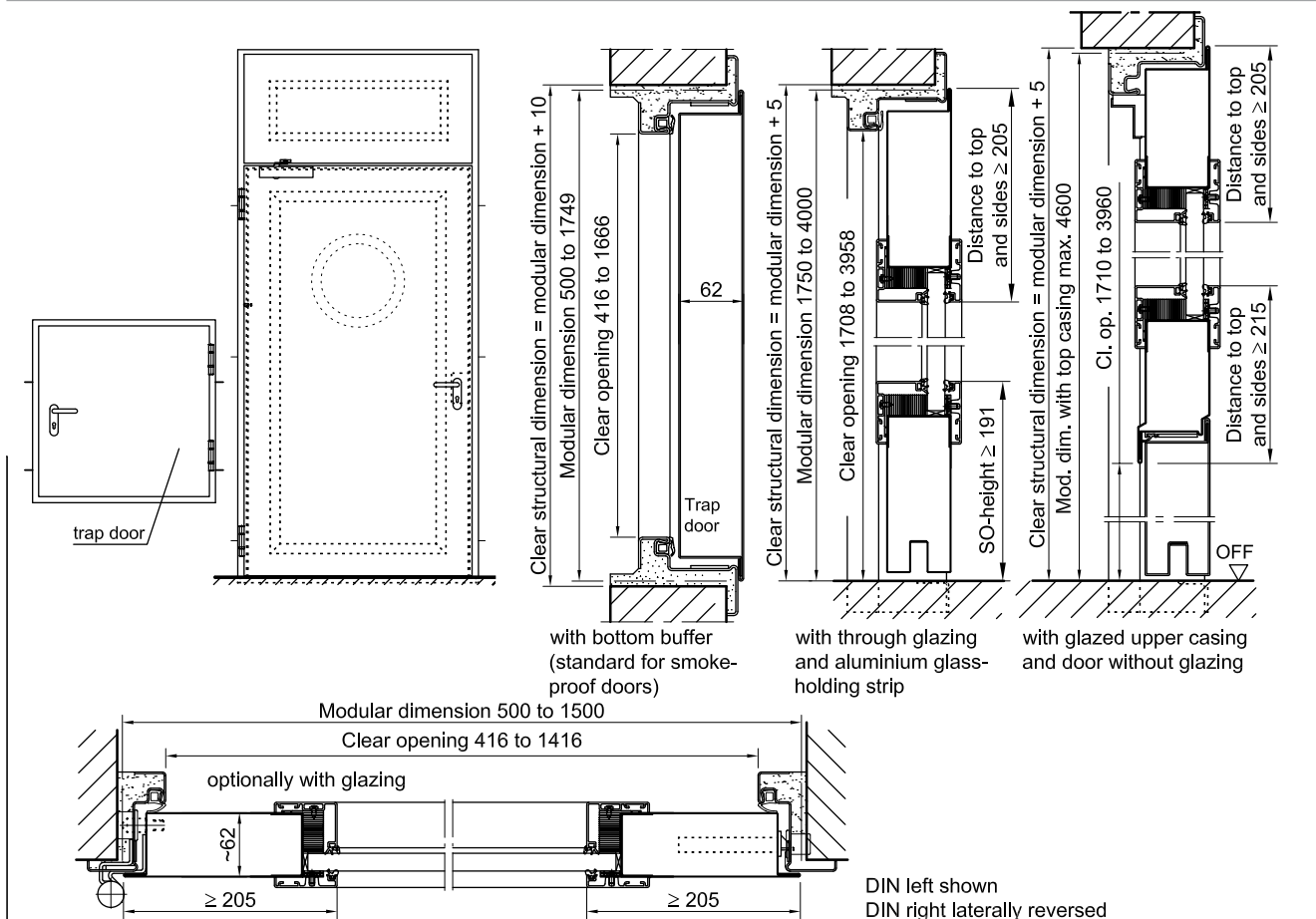
Sound insulated in acc. with DIN EN 20140/717 Part 1
RW 37dB/ 44dB with retractable floor seal
RW 35dB with sliding threshold seal
RW 37dB/ 44dB with bottom buffer and seal



Burglar resistand in accordance with DIN EN 1627 - RC 2, RC 3, RC 4

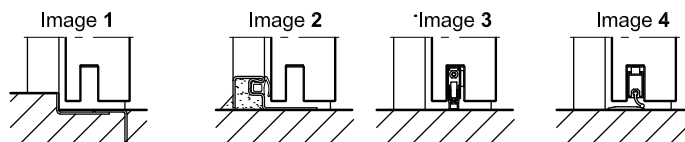
Fire-resistant steel trap door/steel door
T 30-1-FSA „Teckentrup 62“

optionally with glazing, optionally with top light/upper casing



Floor connections:

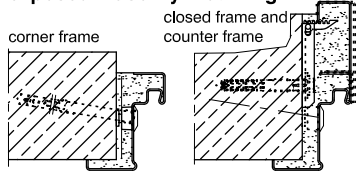
- Image 1: With bottom buffer
- Image 2: With bottom buffer/seal
- Image 3: With bottom seal (smoke-proof door with top door closer)
- Image 3: sliding threshold seal



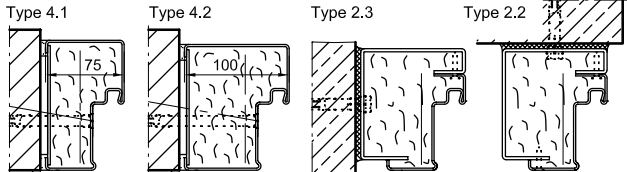
Installation in masonry/ concrete walls

concrete walls ≥ 100 mm
masonry walls ≥ 115 mm

exposed masonry mounting



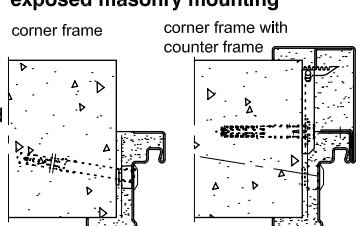
Flush installation



Installation in autoclaved aerated concrete walls

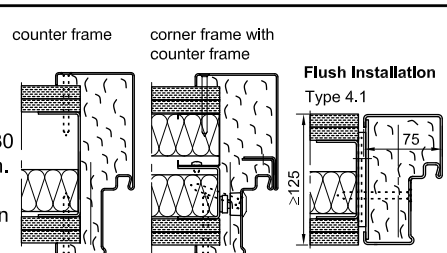
(doors with top door closer)
Made of autoclaved aerated concrete blocks or made of reinforced autoclaved aerated concrete slabs.
Wall thickness min. 115 mm.

exposed masonry mounting



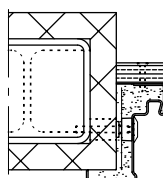
Installation in lightweight construction stud walls

(doors with top door closer)
Installation walls $\geq F30$ wall thickness 88 mm.
For permissible walls refer to the installation details tab



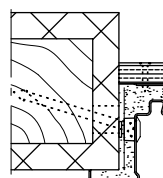
Installation on concealed steel supports

F60



Installation on wooden supports

F60



Please find a detailed installation overview in the planning-, installation- and maintenance manual for 1-leaf and 2-leaf doors.