



Fire resistant steel door T 30-2-FSA „Teckentrup 42“

door with thin rebate

Text example:

T 30-2 FSA fire-proof steel door tested in accordance with EN 1634-1 (DIN 4102). Double-leaf door element. Flush mounted door leaf without hinge stamping. Active door leaf DIN right. Door leaf 42 mm thick, rebated on 3 sides. Corner frame 2 mm thick, with 3-sided seal. Door leaf/Frame galvanized and powder coated, similar to RAL 9002 (Grey white). Active door leaf with mortice lock with latch lever in accordance with DIN 18250, prepared for profile cylinder. Black plastic handle set, handle pivoted on bearing, with tumbler insert (Bb) and 1 Bb key. Inactive door leaf with espagnolette bolt lock. 4 two-piece KO-hinges with ball bearings, 2 top door closer. 1 door selector. 2 Security bolts per leaf.

„Teckentrup 42“ or equivalent.

Compile and tender according to requirements. Please refer to technical data below for respective details. Updated 1st March 2018

Technical Data

Building authority approval	Z-6.20-1956 tested in acc. with EN 1634-1 (DIN 4102) for installation in internal walls Heat transfer coefficient in acc. with EN ISO 12567-1 (without glazing) $U_p = 1.7 \text{ W/m}^2\text{K}$	
Installation in	<ul style="list-style-type: none"> ▪ Masonry min 115 mm ▪ Concrete min 100 mm ▪ Lightweight construction stud walls min 88 mm ▪ Autoclaved aerated concrete wall min. 115 mm - reinforced type min. 115 mm ▪ Installation on concealed steel/ wooden supports F60 	
Approved dimensions	Modular dimensions:	W 1375 – 2250 mm H 1750 – 2250 mm
Handing	DIN right or DIN left	
Door leaf	double skinned, Thin rebated on 3 sides Door leaf thickness: 42 mm Sheet thickness: 1 mm Security bolts per side: 2	
Frame	corner frame 2 mm thick, with 3-sided seal and bottom sill. Frame fastening by exposed masonry mounting Special equipment: <ul style="list-style-type: none"> ▪ block frame, counter frame or closed frame ▪ counter frame or closed frame required for installation in lightweight construction stud walls/ autoclaved aerated concrete. ▪ with floor recess 	
Surface	Galvanized and powder coated door leaf/frame similar to RAL 9002 (Grey white)	
Hinges and closing devices	<ul style="list-style-type: none"> ▪ 2 KO hinges with ball bearings per leaf ▪ 2 top door closer DIN EN 1154 ▪ 1 door selector ▪ Compensation rings for height adjustment 	
Fittings	Active door leaf: <ul style="list-style-type: none"> ▪ Mortice lock with latch lever as per DIN 18250, prepared for profile cylinder Black plastic handle set, handle pivoted on bearing, with tumbler insert (Bb) and 1 Bb key Inactive door leaf: <ul style="list-style-type: none"> ▪ espagnolette bolt lock in the central rebate profile, upward and downward locking 	

Special equipment

- Handle sets/ Lever/ Knob sets:
Plastic
Light metal
Stainless steel
with short plate or rose escutcheon (various makes)
- prepared for rose escutcheon
- Locks:
 - profil cylinder 30,5 + 30,5 mm
 - panic lock
 - block lock (must be provided)
- Panic bar
- Top door closer DIN EN 1154 head assembly with slide rail with locking device with smoke detector
- Electric door opener
- Integrated lock inspector (bolt contact)
- Integrated opening indicator (Reed contact)
- Hold-open devices
- Floor seals are retrofittable

	Ordering dimensions/ modular dimensions	Clear passage size (corner frame)
	Width x Height	Width x Height
Standard sizes	1500 x 2000	1430 x 1965
	2125	2090
	1750 x 2000	1680 x 1965
	2125	2090
	2000 x 2000	1930 x 1965
	2125	2090
	2125 x 2125	2055 x 2090
	2250 x 2250	2180 x 2215

(Special sizes: from 1375 x 1750 to 2250 x 2250)

Further qualificationsn
(Special equipment):



Smoke proof in accordance to 1634-3/ DIN 18095 for solid and lightweight construction stud walls

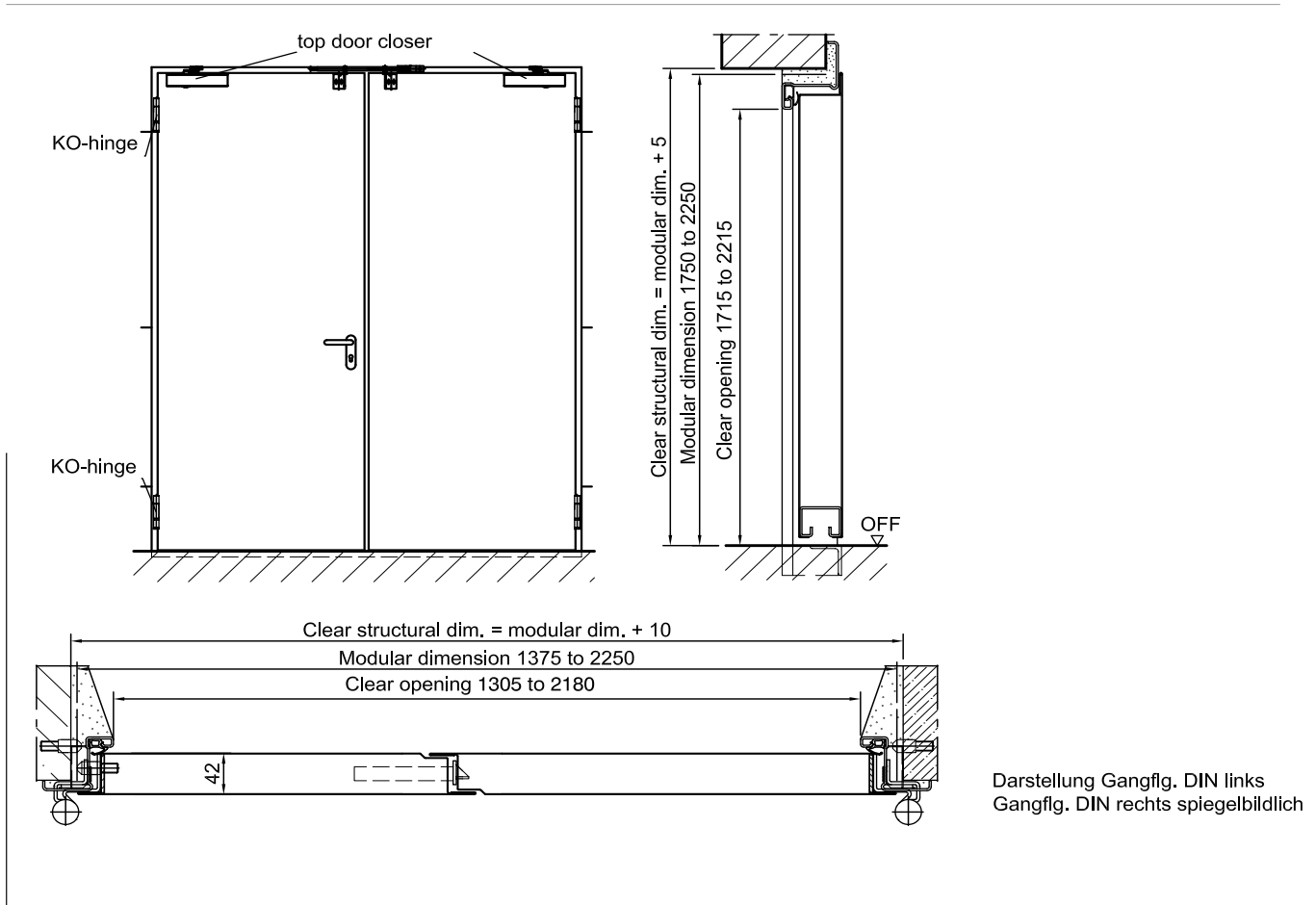


Sound insulation as per DIN EN 20140/717 part 1
RW 40 dB with bottom buffer and seal
RW 38 dB with retractable floor seal
RW 38 dB with sliding threshold seal



Fire resistant steel door
T 30-2-FSA „Teckentrup 42“

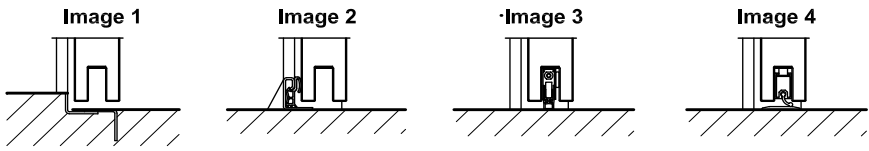
door with thin rebate



Darstellung Gangflg. DIN links
Gangflg. DIN rechts spiegelbildlich

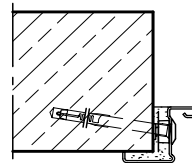
Floor connections:

- Image 1: With bottom buffer
- Image 2: With bottom buffer/seal
- Image 3: With bottom seal
- Image 4: sliding threshold seal (smoke-proof door with top door closer)

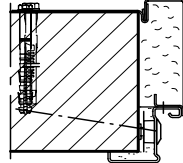


**Installation in masonry/
concrete walls**
concrete walls ≥ 100 mm
masonry walls ≥ 115 mm

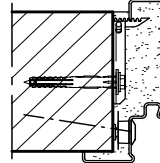
**Exposed masonry
installation**
Corner frame



Corner frame with
counter frame

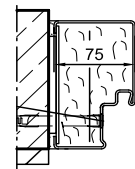


Closed frame

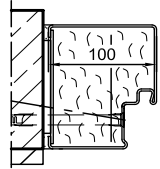


Flush installation

Type 4.1

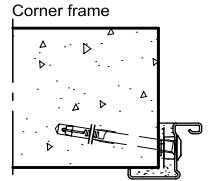


Type 4.2



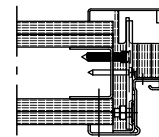
**Installation in autoclaved
aerated concrete walls** (doors
with top door closer). Made of
autoclaved aerated concrete
blocks or high precision units
min. 115 mm or made of
reinforced autoclaved aerated
concrete slabs strength class 4.
Wall thickness ≥ 115 mm

Wall plug assembly
Corner frame

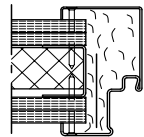


**Installation in lightweight
construction stud walls**
(doors with top door closer) min.
F30 Part 4 or in acc. with general
building authority test certificate
wall thickness min. 88 mm. For
permissible walls refer to the
Installation details tab.

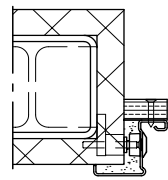
Corner frame with
counter frame



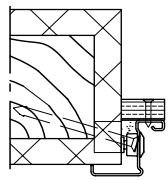
Closed frame



**Installation on concealed
steel supports**
F60



**Installation on
wooden supports**
F60



Please find a detailed installation
overview in the planning-, installation-
and maintenance manual for 1-leaf
and 2-leaf doors.