



## Fire resistant steel trap door/ steel door T 90-1-FSA „Teckentrup 62“

Installation in larger heights

### Text example:

T 90-1-FSA fire-proof steel door tested in accordance with EN 1634-1 (DIN 4102) . Single-leaf door element. Type of handing DIN right. Door leaf 62 mm thick, rebated on three sides. Corner frame 1.5 mm thick, with 3-sided seal and bottom sill. Door leaf and frame galvanized and prime coated similar to RAL 9002 (Grey white). Mortice lock with latch lever in accordance with DIN 18250, prepared for profile for profile cylinder. Black plastic round handle pivoted on bearing with tumbler insert (Bb) and 1 Bb-key. 2 KO-hinge with ball bearings, 1 top door closer, 3 security bolts.

“Teckentrup 62“ or equivalent.

Compile and tender according to requirements. Please refer to technical data below for respective details. Updated 1. March 2018

### Technical data

<b>Building authority approval</b>	Z-6.20-1965 tested as per <b>EN 1634-1</b> (DIN 4102) for <b>raised installation</b> (internal walls).	<b>Special equipment</b>	<ul style="list-style-type: none"> <li>▪ Handle sets \ Lever/Knob sets: with short plate or rose escutcheon               <ul style="list-style-type: none"> <li>- plastic</li> <li>- light metal</li> <li>- stainless steel (various makes)</li> </ul> </li> <li>▪ Prepared for rose escutcheon</li> <li>▪ Locks               <ul style="list-style-type: none"> <li>- Panic locks</li> <li>- Block lock (must be provided)</li> </ul> </li> <li>▪ Profile cylinder 40.5 + 40.5 mm</li> <li>▪ Top door closer DIN EN 1154               <ul style="list-style-type: none"> <li>- head assembly - with slide rail</li> <li>- with locking device</li> <li>- with smoke detector</li> <li>- ITS 96 (hidden)</li> </ul> </li> <li>▪ Secured drive lock</li> <li>▪ Electric door opener</li> <li>▪ Lock control (bolt contact) integrated</li> <li>▪ Opening detector (reed contact) integrated</li> <li>▪ Revolving door drives</li> <li>▪ Hold-open devices</li> </ul>																																											
<b>Installation in</b>	<ul style="list-style-type: none"> <li>▪ Masonry min. 175 mm</li> <li>▪ Concrete min. 140 mm</li> <li>▪ Leight weight construction stud walls * min. 84 mm</li> <li>▪ Autoclaved aerated concrete               <ul style="list-style-type: none"> <li>- as per DIN 4165 min. 175 mm</li> <li>- reinforced type min. 150 mm</li> </ul> </li> <li>▪ Cladded steel/wood beams F 90</li> </ul> <p>* F 90 as per DIN 4102 part 4 or in accordance with the general building authority test certificate. For permissible walls refer to the installation details tab.</p>																																													
<b>Approved dimensions</b>	Modular dimension W 500 – 1250 mm H 500 – 2250 mm																																													
<b>Handing</b>	DIN right or DIN left																																													
<b>Door (trap door) leaf</b>	Double-skinned , trap door and door rebated on three sides <b>thin rebated</b> Door leaf thickness 62 mm Sheet thickness 1,0 mm Security bolt 1 - 3																																													
<b>Frame</b>	Corner frame 1,5 mm thick, trap door and door with 3-sidesd seal and bottom sill. Mounting in exposed masonry without floor recess. Special equipment: block frame, counter or closed frame.																																													
<b>Surface</b>	Door leaf/frame galvanized and prime coated, similar to RAL 9002 (Grey white).																																													
<b>Hinges, closing devices</b>	▪ 2 KO-hinges with ball bearings and 1 top door closer																																													
<b>Fittings</b>	<ul style="list-style-type: none"> <li>▪ Mortice lock with latch lever DIN 18250</li> <li>▪ Black plastic handle set, handle pivoted on bearing with tumbler insert (Bb) and 1 Bb-key</li> </ul>																																													
		<table border="1"> <thead> <tr> <th></th> <th>Ordering dimensions/ modular dimensions width x height</th> <th>Clear passage size (corner frame) width x height</th> </tr> </thead> <tbody> <tr> <td rowspan="5"><b>Standard sizes steel trap door</b></td> <td>750 x 875</td> <td>666 x 791</td> </tr> <tr> <td>875 x 875</td> <td>791 x 791</td> </tr> <tr> <td>1000</td> <td>916</td> </tr> <tr> <td>1250</td> <td>1166</td> </tr> <tr> <td>1000 x 1000</td> <td>916 x 916</td> </tr> <tr> <td rowspan="10"><b>Standard sizes steel door</b></td> <td>1250</td> <td>1166</td> </tr> <tr> <td>1250 x 1250</td> <td>1166 x 1166</td> </tr> <tr> <td>750 x 2000</td> <td>666 x 1958</td> </tr> <tr> <td>2125</td> <td>2083</td> </tr> <tr> <td>875 x 1875</td> <td>791 x 1833</td> </tr> <tr> <td>2000</td> <td>1958</td> </tr> <tr> <td>2125</td> <td>2083</td> </tr> <tr> <td>1000 x 2000</td> <td>916 x 1958</td> </tr> <tr> <td>2125</td> <td>2083</td> </tr> <tr> <td>1125 x 2000</td> <td>1041 x 1958</td> </tr> <tr> <td>2125</td> <td>2083</td> </tr> <tr> <td>1250 x 2000</td> <td>1166 x 1961</td> </tr> <tr> <td>2125</td> <td>2083</td> </tr> <tr> <td>2250</td> <td>2208</td> </tr> </tbody> </table>		Ordering dimensions/ modular dimensions width x height	Clear passage size (corner frame) width x height	<b>Standard sizes steel trap door</b>	750 x 875	666 x 791	875 x 875	791 x 791	1000	916	1250	1166	1000 x 1000	916 x 916	<b>Standard sizes steel door</b>	1250	1166	1250 x 1250	1166 x 1166	750 x 2000	666 x 1958	2125	2083	875 x 1875	791 x 1833	2000	1958	2125	2083	1000 x 2000	916 x 1958	2125	2083	1125 x 2000	1041 x 1958	2125	2083	1250 x 2000	1166 x 1961	2125	2083	2250	2208	
	Ordering dimensions/ modular dimensions width x height	Clear passage size (corner frame) width x height																																												
<b>Standard sizes steel trap door</b>	750 x 875	666 x 791																																												
	875 x 875	791 x 791																																												
	1000	916																																												
	1250	1166																																												
	1000 x 1000	916 x 916																																												
<b>Standard sizes steel door</b>	1250	1166																																												
	1250 x 1250	1166 x 1166																																												
	750 x 2000	666 x 1958																																												
	2125	2083																																												
	875 x 1875	791 x 1833																																												
	2000	1958																																												
	2125	2083																																												
	1000 x 2000	916 x 1958																																												
	2125	2083																																												
	1125 x 2000	1041 x 1958																																												
2125	2083																																													
1250 x 2000	1166 x 1961																																													
2125	2083																																													
2250	2208																																													

(Special sizes: from 500 x 1250 up to 500 x 2250)

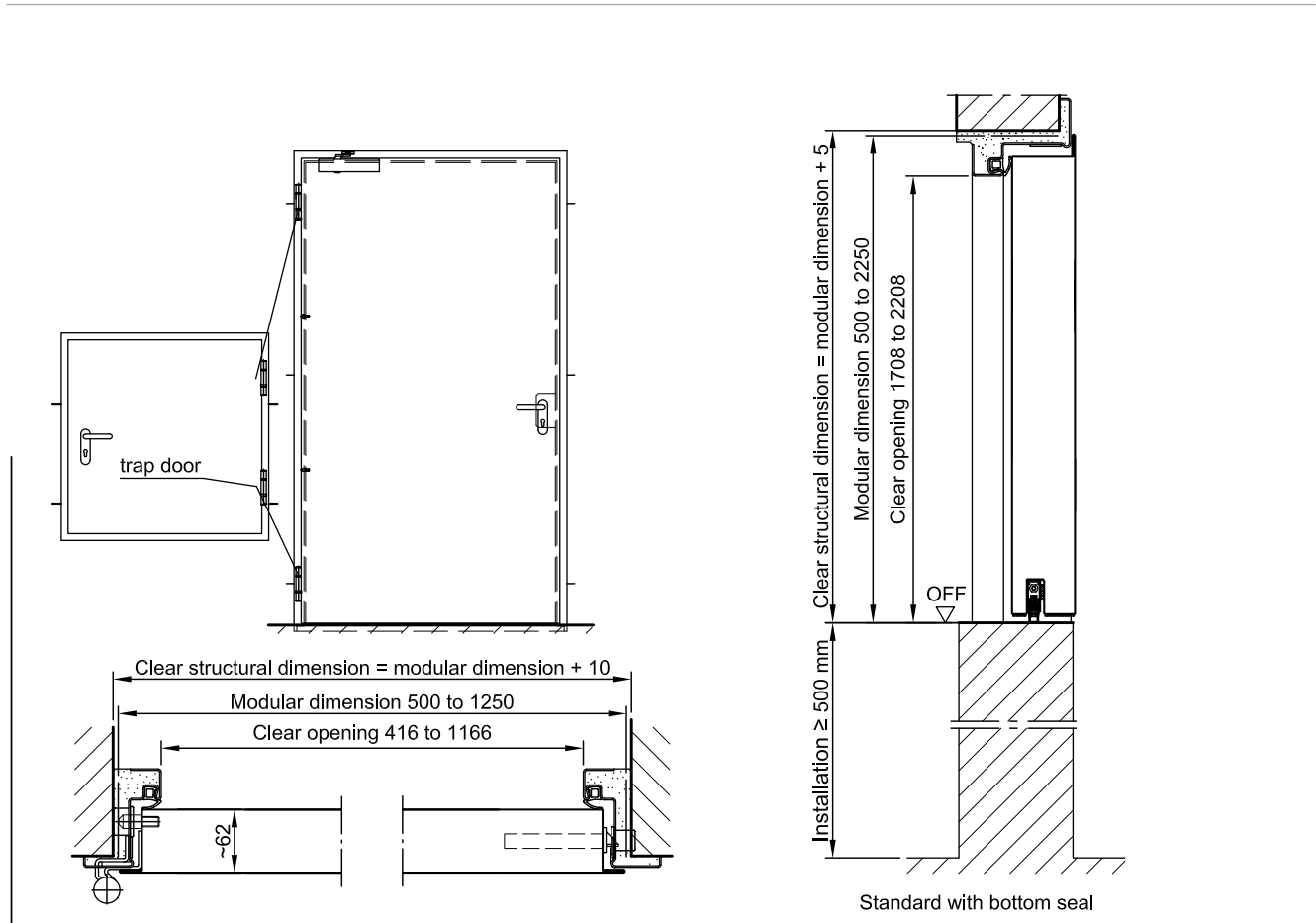
Further Qualifications  
(Special equipment):



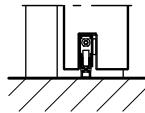
Smoke proof in accordance with  
EN 1634-3/ DIN 18095

**Fire resistant steeltrap door/ steel door**  
**T 90-1-FSA „Teckentrup 62“**

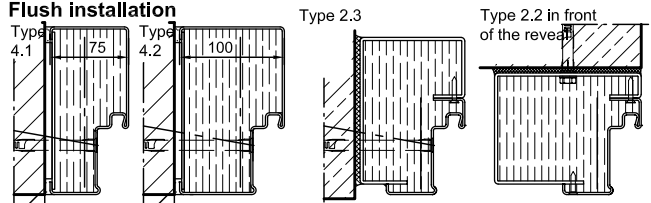
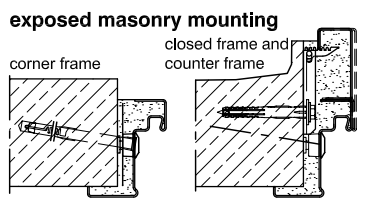
Installation in larger heights



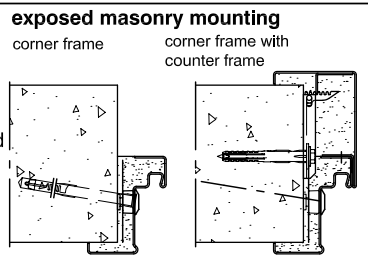
**Floor connections:**  
With bottom seal



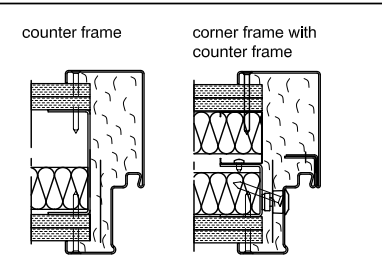
**Installation in masonry/ concrete walls**  
concrete walls ≥ 140 mm  
masonry walls ≥ 175 mm



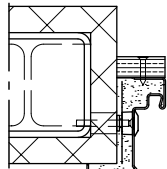
**Installation in autoclaved aerated concrete walls**  
(doors with top door closer)  
Made of autoclaved aerated concrete blocks or made of reinforced autoclaved aerated concrete slabs.  
Wall thickness min. 150 mm.



**Installation in lightweight construction stud walls** (doors with top door closer) Installation walls ≥ F90 wall thickness 100 mm. For permissible walls refer to the installation details tab



**Installation on concealed steel supports**  
F90



Please find a detailed installation overview in the planning-, installation- and maintenance manual for 1-leaf and 2-leaf doors.