



## Security steel door dw 62-2 „Teckentrup“ RC 2- RC 4

Door with **thin rebate**, optionally with glazing/ventilation grille

### Text example:

Security steel door dw 62-2 „Teckentrup“, tested in accordance with DIN EN 1627-RC 2. Double-leaf door element. Active door leaf DIN right. Door leaf 62 mm thick, rebated on 3-sides. Corner frame 1.5 mm thick, with 3-sided seal and bottom sill. Door-leaf and frame galvanized and powder-coated (primed) in Grey white, similar to RAL 9002. FS-Alu safety-handle set, class ES 1 DIN 18257. Safety profile cylinder P2 with anti-drilling and extraction protection BZ, DIN 18252. 3 keys and security certificate. 2 KO hinges with ball bearings. 1 security bolt per leaf.

Compile and tender according to requirements. Please refer to technical data below for respective details. Updated 1. April 2018

### Technical data

Also available in **STAINLESS STEEL**

<b>Product</b>	Security steel door <b>dw 62-2 „Teckentrup“</b> in accordance with DIN EN 1627- RC 2 - RC 4 Heat insulation as per EN ISO 12567-1 (unglazed), RC2 - RC3 = $U_D$ : max. 1,4 W/m <sup>2</sup> K	
<b>Installation in</b>	<ul style="list-style-type: none"> <li>▪ Masonry min. 115 mm</li> <li>▪ Concrete min. 100 mm</li> <li>▪ Aerated concrete min. 170 mm</li> <li>▪ Lightweight construction stud walls must meet the manufacturer's security requirements.</li> </ul>	
<b>Dimensions</b>	width: 1375 - 3000 mm height: 1750 - 3000 mm	
<b>Type of handing</b>	DIN right or DIN left	
<b>Door leaf</b>	Double-skinned, 3 sides Door leaf thickness: 62 mm Sheet thickness: 1,0 or 1,5 mm Security bolts: min. 1 per leaf	<b>thin rebated</b>
<b>Frame</b>	Corner frame 1,5/2,0mm thick, trap door with 4-sided, door with 3-sided seal. Frame fastening by exposed masonry mounting. Special equipment: <ul style="list-style-type: none"> <li>▪ block-, counter- or closed frame</li> <li>▪ with floor recess</li> </ul>	
<b>Floor seals</b>	<ul style="list-style-type: none"> <li>▪ Retractable floor seal</li> <li>▪ Sliding threshold seal</li> <li>▪ Buffer strip and seal</li> </ul> Floor seal retrofittable	
<b>Surface</b>	Door leaf/Frame galvanized and prime coated, similar to RAL 9002 (Grey white). <ul style="list-style-type: none"> <li>▪ Special equipment: RAL of choice</li> </ul>	
<b>Hinges and closing devices</b>	<ul style="list-style-type: none"> <li>▪ 2 KO hinges with ball bearings per leaf (secured hinge bolt)</li> </ul>	
<b>Fittings</b>	<ul style="list-style-type: none"> <li>▪ RC 2: Active leaf = Mortise lock prepared for profile cylinder (up to MD-height 2750 mm only with main lock, &gt; 2750 mm with top locking). FS alu safety handle set class ES 1 DIN 18257</li> <li>▪ RC 3: Active leaf = Reinforced mortise lock prepared for profile cylinder (up to MD-height 2500 mm only with main lock, &gt; 2500 mm with top locking). FS alu safety handle set class ES 3 DIN 18257</li> <li>▪ RC 4: Active leaf = Mortise lock prepared for profile cylinder, with additional top and bottom locking. FS alu safety handle set class ES 3 DIN 18257</li> </ul> RC 2 - RC 4: Safety profile cylinder P2 with anti-drilling and extraction protection BZ as per DIN 18252. 3 keys and security certificate. Inactive leaf: Concealed flush lever bolt with top and bottom locking bar	

<b>Glazing</b>	<ul style="list-style-type: none"> <li>▪ RC 2: Burglar resistance class as per DIN EN 356-P4A</li> <li>▪ RC 3: Burglar resistance class as per DIN EN 356-P5A</li> <li>▪ RC 4: Burglar resistance class as per DIN EN 356-P6B</li> </ul> RC 2 - RC 4: Standard: with aluminium glass holding strips (steel glass holding strips on request without additional charge).
<b>Special equipment</b>	Handle sets / Lever/Knob sets: - plastic - light metal - stainless steel  - with short plate or rose escutcheon (various makes)  locks: profile cylinder 45+ 40 mm - panic locks block lock (must be provided) <ul style="list-style-type: none"> <li>▪ top door closer DIN EN 1154               <ul style="list-style-type: none"> <li>- head assembly</li> <li>- with slide rail</li> <li>- with locking device</li> <li>- with smoke detector</li> <li>- ITS 96 (hidden)</li> </ul> </li> <li>▪ electric door opener</li> <li>▪ Integrated lock inspector (bolt contact)</li> <li>▪ Integrated opening indicator (Reed contact)</li> <li>▪ Hold-open devices</li> <li>▪ 3D-hinges (with top door closer)</li> </ul>

	Ordering dimensions / (modular dimensions) width x height	Clear passage size (corner frame) width x height
<b>Standard sizes</b>	1500 x 2000	1416 x 1958
	2125	2083
	1750 x 2000	1666 x 1958
	2125	2083
	2000 x 2000	1916 x 1958
	2125	2083
	2500	2458
	2125 x 2125	2041 x 2083
	2250 x 2250	2166 x 2208
2500 x 2500	2416 x 2458	

(Special sizes: from 1375 x 1750 to 3000x3500 mm)

**Further Qualifications**  
(Special equipment)

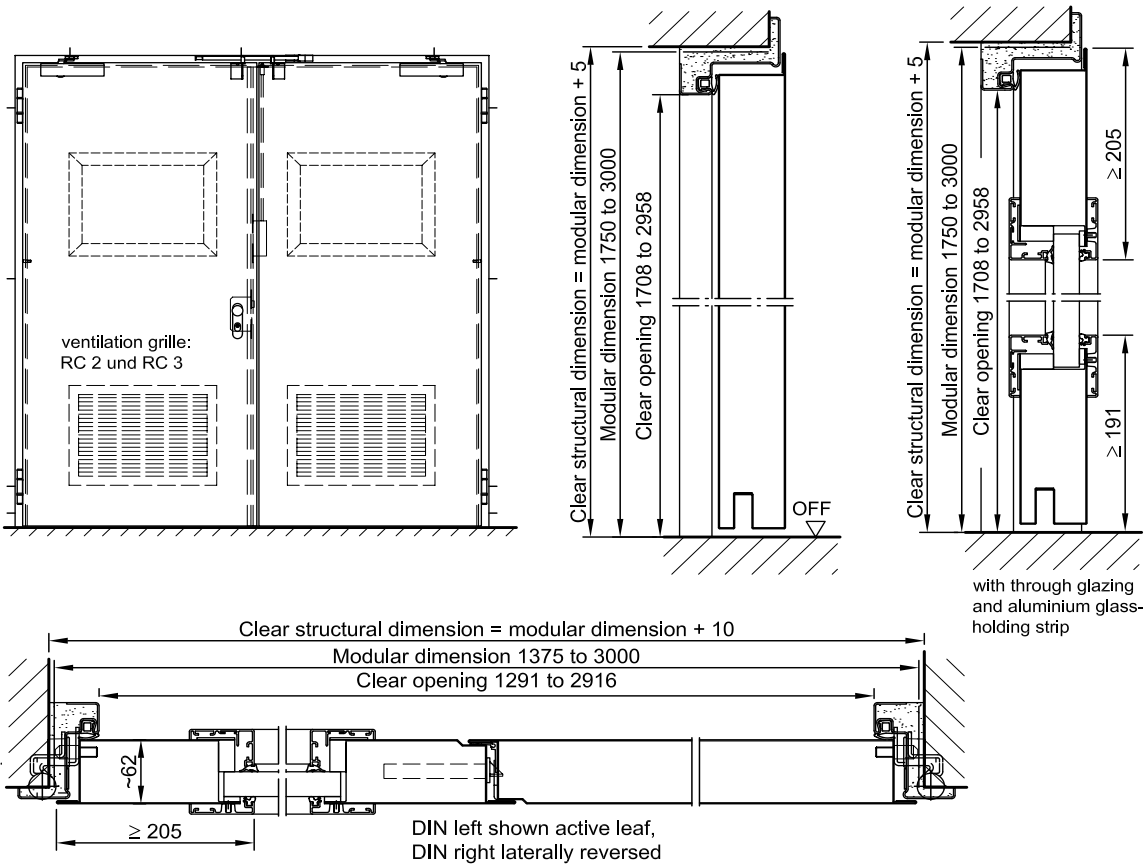


**Sound insulated in acc. with DIN EN 20140/717 Part 1**  
 RC 2 / RC 3:  
**RW 37dB** with bottom buffer and seal  
**RW 37dB** with retractable floor seal  
**RW 35dB** with sliding threshold seal



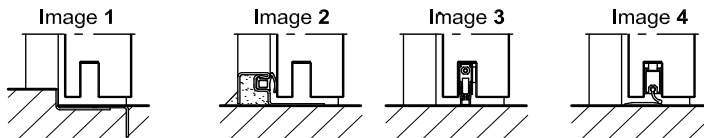
# Security steel door dw 62-2 „Teckentrup“ RC 2- RC 4

Door with **thin rebate**, optionally with glazing/ventilation grille



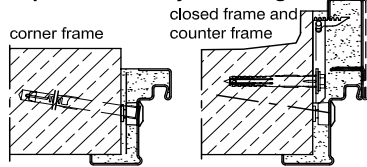
**Floor connections:**

- Image 1: With bottom buffer
- Image 2: With bottom buffer/seal
- Image 3: With bottom seal (smoke-proof door with top door closer)
- Image 4: sliding threshold seal

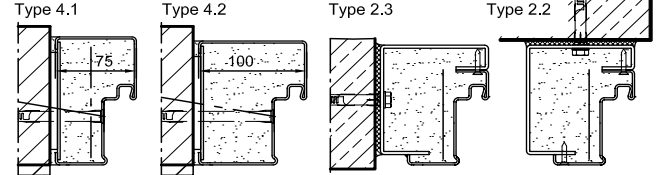


**Installation in masonry/  
concrete walls**  
concrete walls ≥ 100 mm  
masonry walls ≥ 115 mm

**exposed masonry mounting**

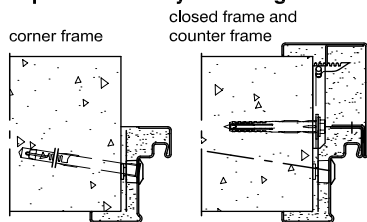


**Flush installation**

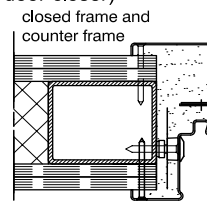


**Installation in autoclaved  
aerated concrete walls**  
(doors with top door closer)

**exposed masonry mounting**



**Installation in lightweight construction stud  
walls (doors with top door closer)**



Please find a detailed installation overview in the planning-, installation- and maintenance manual for 1-leaf and 2-leaf doors.