



Steel door dw 42-1 „Teckentrup“

optionally with glazing, optionally with upper casing

Text example

dw 42-1 steel door. Single-leaf door element.

Type of handing DIN right. Door leaf 42 mm thick, rebated on 3 sides. Corner frame, 2 mm thick, with 3-sided seal. Flush mounted door leaf with less protruding hinges. Door leaf and frame galvanized and powder coated, similar to RAL 9002 (Grey white). Mortice lock with latch lever, prepared for profile cylinder. Black plastic handle set. Handle pivoted on bearing, with tumbler insert (Bb) and 1 Bb key.

1 security bolt, 2 KO hinges with ball bearings.

„Teckentrup“ or equivalent.

(Compile and tender according to requirements. Please refer to technical data below for respective details. Updated 1. April 2018)

Technical data

Product	dw 42-1-door „Teckentrup“ Heat insulation in acc. with EN ISO 12567-1 $U_D = 1.6 \text{ W/m}^2\text{K}$ (Sheet thickness 1.0 mm)																												
Installation in	<ul style="list-style-type: none"> ▪ Masonry ▪ Concrete ▪ Autoclaved aerated concrete ▪ Lightweight construction wall 																												
Dimensions	Width:	625 - 1250 mm																											
	Height:	1750 - 2250 mm																											
Type of handing	DIN right or DIN left																												
Door leaf	Double-skinned, thin rebated on 3 sides Door leaf thickness: 42 mm Sheet thickness: 1.0 or 1.5 mm Security bolt: min. 1 Insulation: mineral wool																												
Frame	corner frame 2 mm thick, with 3-sided seal and bottom sill. Frame fastening by exposed masonry mounting Special equipment: <ul style="list-style-type: none"> ▪ block frame, counter frame or closed frame ▪ counter frame or closed frame required for installation in lightweight construction stud walls/autoclaved aerated concrete. ▪ with floor recess 																												
Surface	Galvanized and prime coated door leaf/frame similar to RAL 9002 (Grey white) Special equipment: Stainless steel																												
Hinges	<ul style="list-style-type: none"> ▪ 1 Spring hinge ▪ 1 KO hinge with ball bearings ▪ Compensation rings for height adjustment 																												
Fittings	<ul style="list-style-type: none"> ▪ Mortice lock with latch lever, prepared for profile cylinder ▪ Black plastic handle set, handle pivoted on bearing, with tumbler insert and 1 Bb key 																												
Glazing	<ul style="list-style-type: none"> ▪ Standard glazing wire reinforced glass with alu glazing strips-Special glazing <ul style="list-style-type: none"> - rhombus-shaped glazing, - round glazing (rubber clamp profile, steel/stainless steel ring) - cut-out of choice with light metal strips, max. glass pane size up to 1,5 m². ▪ Glazing <ul style="list-style-type: none"> - VSG laminated safety glass - acrylic glass - ISO glass VSG/VSG - ISO glass, wire reinforced/VSG 																												
	Special equipment	<ul style="list-style-type: none"> ▪ Handle sets / Lever / Knob sets: <ul style="list-style-type: none"> - plastic - light metal - stainless steel - with short plate or rose escutcheon (various makes) with fixed outer knob ▪ Locks: <ul style="list-style-type: none"> ▪ Profile cylinder 30.5 + 30.5 mm ▪ Panic locks ▪ Top door closer DIN EN 1154 ▪ Spring hinge ▪ Floor seal ▪ Rectangular glazing (special size) ▪ Round glazing max. Ø 600 mm with rubber clamping profile ▪ Aluminium ventilation grille ▪ Steel transformer grille ▪ Upper casing ▪ Upper casing with glazing or transformer grille ▪ Aluminium rain guard ▪ Floor seals are retrofittable 																											
		<table border="1"> <thead> <tr> <th></th> <th>Ordering size/ Modular dim. width x height</th> <th>Clear opening size (corner frame) width x height</th> </tr> </thead> <tbody> <tr> <td rowspan="10">Standard sizes</td> <td>750 x 2000</td> <td>680 x 1965</td> </tr> <tr> <td>875 x 1875</td> <td>805 x 1840</td> </tr> <tr> <td>2000</td> <td>1965</td> </tr> <tr> <td>2125</td> <td>2090</td> </tr> <tr> <td>1000 x 2000</td> <td>930 x 1965</td> </tr> <tr> <td>2125</td> <td>2090</td> </tr> <tr> <td>1125 x 2000</td> <td>1066 x 1965</td> </tr> <tr> <td>2125</td> <td>2090</td> </tr> <tr> <td>1250 x 2000</td> <td>1180 x 1965</td> </tr> <tr> <td>2125</td> <td>2090</td> </tr> <tr> <td>2250</td> <td>2215</td> <td></td> </tr> </tbody> </table>		Ordering size/ Modular dim. width x height	Clear opening size (corner frame) width x height	Standard sizes	750 x 2000	680 x 1965	875 x 1875	805 x 1840	2000	1965	2125	2090	1000 x 2000	930 x 1965	2125	2090	1125 x 2000	1066 x 1965	2125	2090	1250 x 2000	1180 x 1965	2125	2090	2250	2215	
	Ordering size/ Modular dim. width x height	Clear opening size (corner frame) width x height																											
Standard sizes	750 x 2000	680 x 1965																											
	875 x 1875	805 x 1840																											
	2000	1965																											
	2125	2090																											
	1000 x 2000	930 x 1965																											
	2125	2090																											
	1125 x 2000	1066 x 1965																											
	2125	2090																											
	1250 x 2000	1180 x 1965																											
	2125	2090																											
2250	2215																												

Further qualifications
(special equipment)



Sound insulated as per DIN EN 20140/717-1
Sheet thickness 1.5 mm (without glazing):
Rw 40dB with bottom buffer
Rw 38dB with retractable bottom seal
Rw 38dB with sliding threshold seal

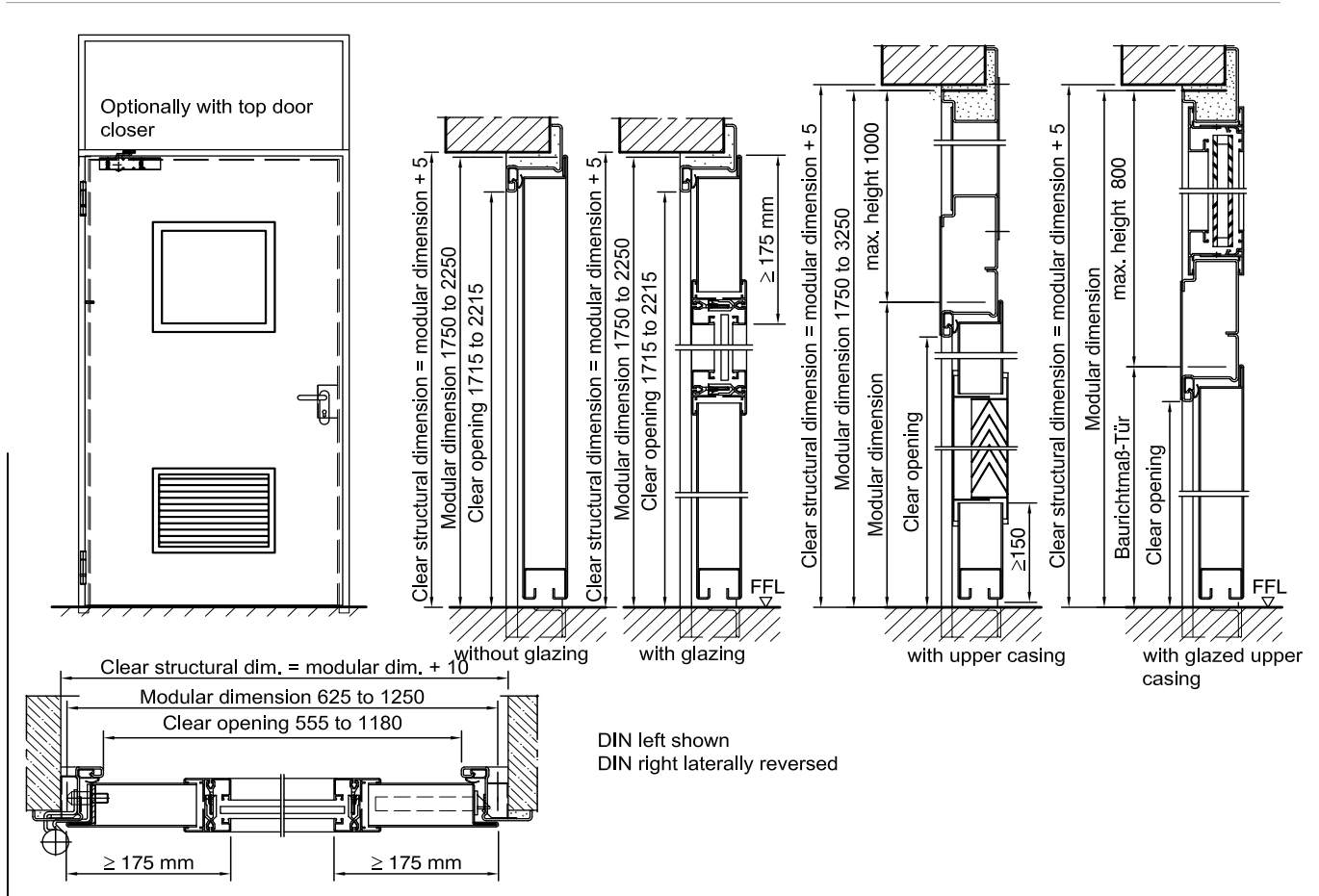


Burglar-resistant as per
DIN ENV 1627
WK 2



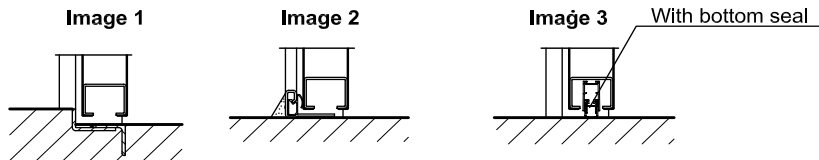
Steel door dw 42-1 „Teckentrup“

optionally with glazing, optionally with upper casing



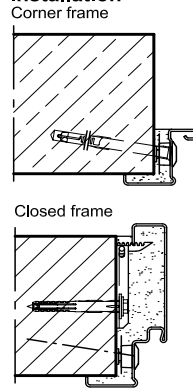
Floor connections:

Image 1: With bottom buffer
Image 2: With bottom buffer/seal
Image 3: With bottom seal

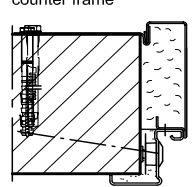


**Installation in masonry/
concrete walls**

**Exposed masonry
Installation**



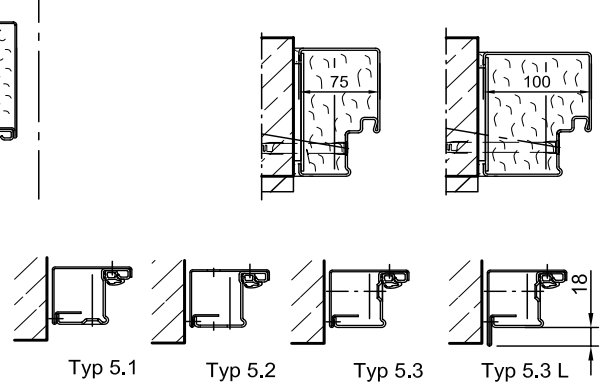
**Corner frame with
counter frame**



Block-Frame

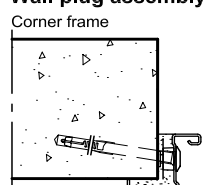
Type 4.1

Type 4.2



**Installation in autoclaved
aerated concrete walls**

Wall plug assembly



**Installation in lightweight
construction stud walls**

Corner frame with
counter frame

Closed frame

