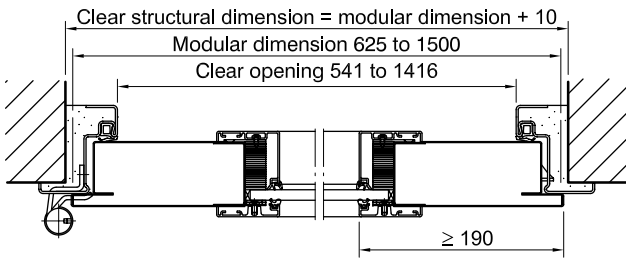
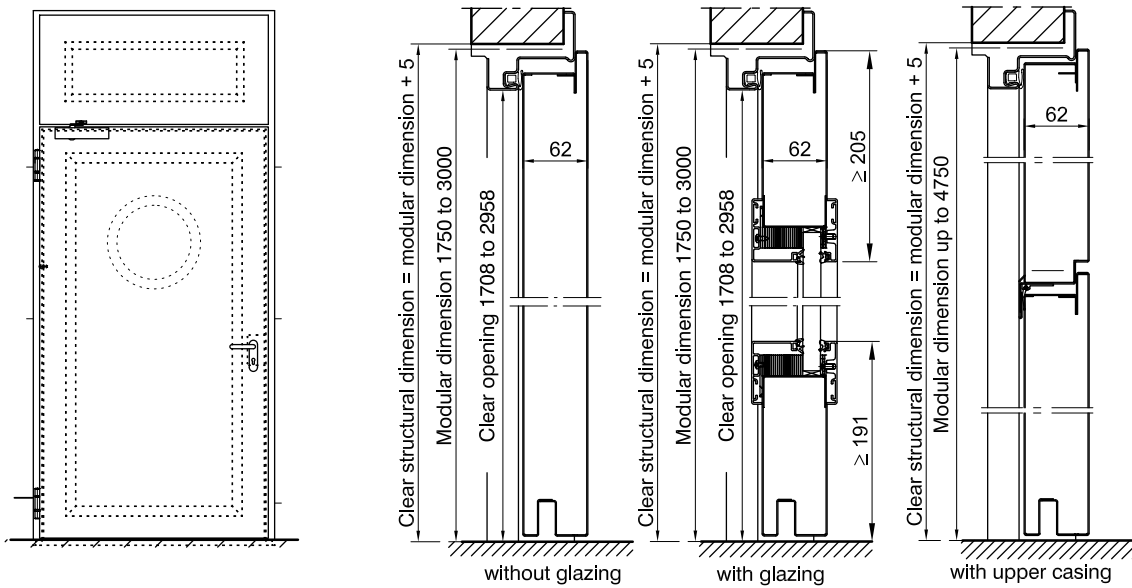


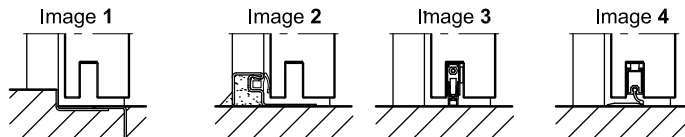
Steel door 62-1, „Teckentrup“
Steel door 62-1, „Teckentrup XL“

thick rebated, optionally with glazing, optionally with top light/upper casing



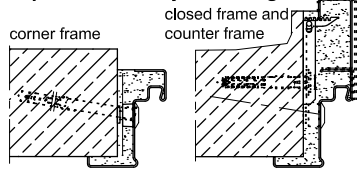
Floor connections:

- Image 1: With bottom buffer
- Image 2: With bottom buffer/seal
- Image 3: With bottom seal (smoke-proof door with top door closer)
- Image 4: sliding threshold seal

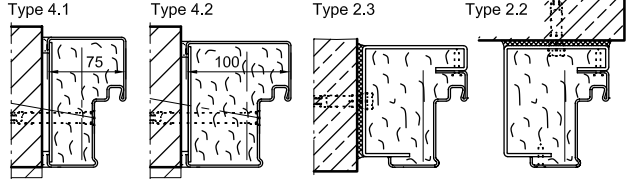


Installation in masonry/ concrete walls

exposed masonry mounting

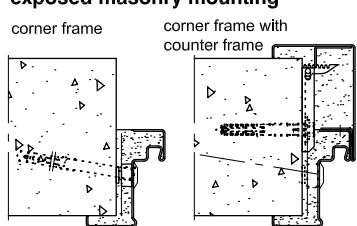


Flush installation

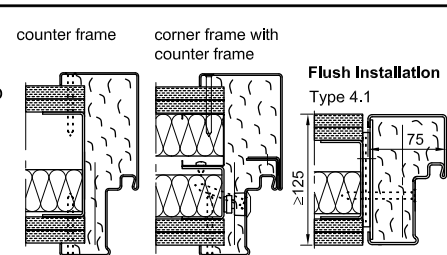


Installation in autoclaved aerated concrete walls

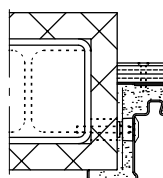
exposed masonry mounting



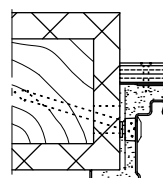
Installation in lightweight construction stud walls (doors with top door closer)



Installation on concealed steel supports



Installation on wooden supports



Please find a detailed installation overview in the planning-, installation- and maintenance manual for 1-leaf and 2-leaf doors.